



Joel Amit



Joel Amit

Joel Amit, born in Jerusalem in 1982, resides in his homeland where he is noted as both a brilliant designer and artist. After his military service, Amit had left to the Negev desert to join the pioneer Ayalim Association, which was building new student and artist villages in order to strengthen the periphery and draw young settlers.

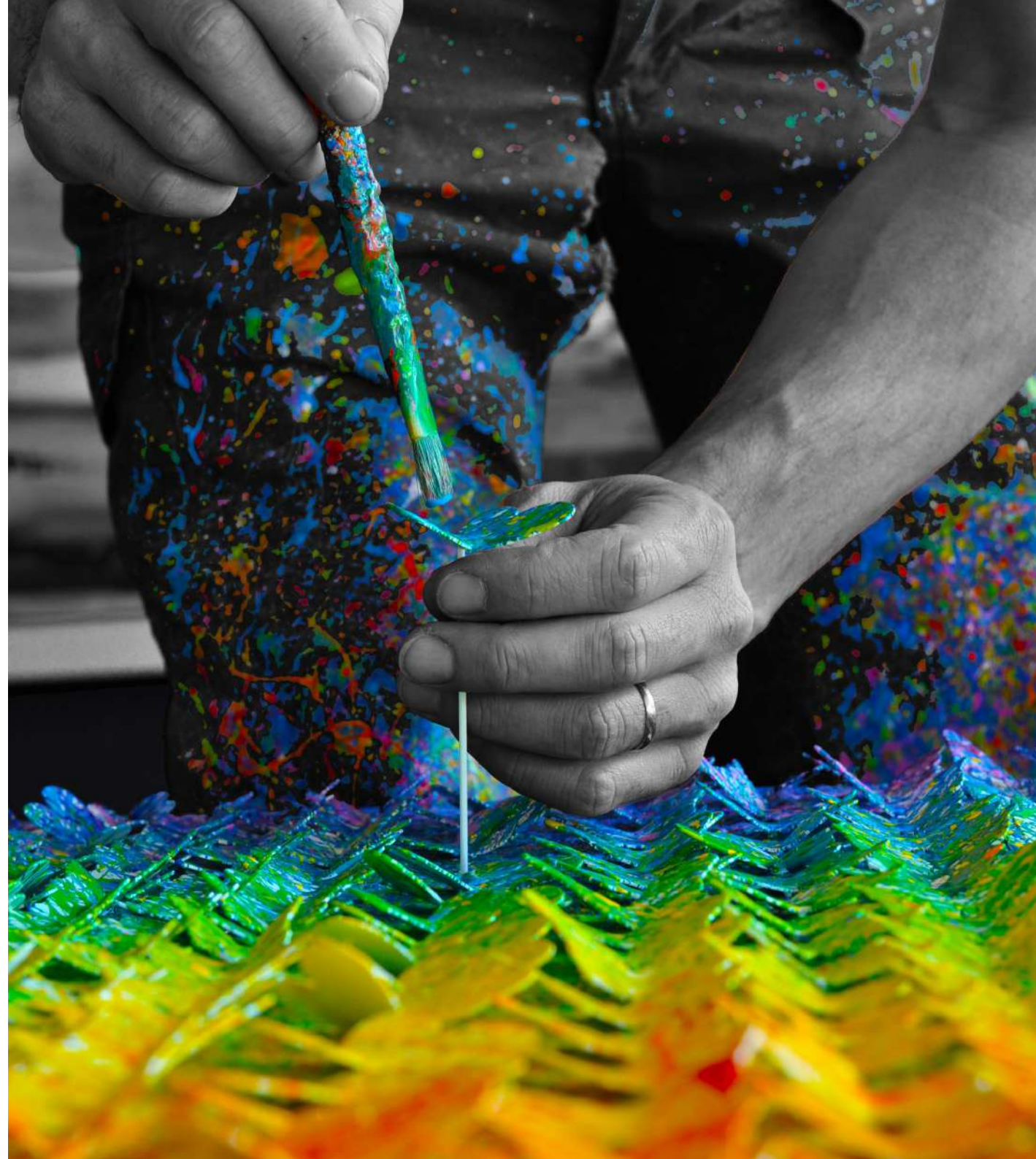
During this time Amit had gained his B.A. in psychology at the Ben-Gurion University (2009) and was on the course of continuing to further studies and practice in rehabilitation neuro-psychology. However, his engagement with the creative and technical process of planning and building villages had affected him deeply and he had decided to change course, and begin architecture studies at the Bezalel Academy of Arts and Design.

Parallel to his studies Amit had begun creating art from laser-cut metal, and by the time he graduated his B.arch. (2016) he had already gained international recognition for his art.

Amit works mostly with laser-cut metal, creating domestic-scale wall sculptures, as well as large scale public installations. Influenced by nature and its coexistence with the computerized world, Amit created his "staccato" movement, a representation of the beauty and spontaneity of life to the edge digital plastic age. Each vibrantly painted metal piece is strategically set

in planes of space and become magical in with rhythmic energy.

Amit finds the contrast and process of forming heavy and cold steel into graceful, flowing works of art "liberating". Joel expresses, "I am always in search for an extra dimension, a hidden layer, and to challenge the eye; and it is my sole wish to share it with others." Today his art is presented in galleries and Museums in 5 continents.



Artist statement

Joel Amit's work focuses on the 'Power of Many'. It constantly pursues the sense of wonder in visualizing innumerable objects that are organized in a random, yet correlated pattern. By manipulating layout and density in a 3D space, Amit seeks to achieve a sense of movement, an imagined 4th dimension of time.

Amit draws his inspiration from graceful movements found in nature; he examines the effect of their deconstruction through the filter of computerized and pixelated media.

While observing a flock of birds moving across the sky, the larger the flock, the greater the impression it makes on the observer. In Amit's artwork, the 'effect of the many' is twofold: in addition to the visceral awe experienced from observing something abundant, the sense of wonder is also drawn from the evident hard work and diligence required in order to produce such great quantities. This direct correlation between repetitive work and effect offers a relevant message in our current world, where things are expected to happen 'instantly', with the press of a button.



FOUR ELEMENTS 50x50cm

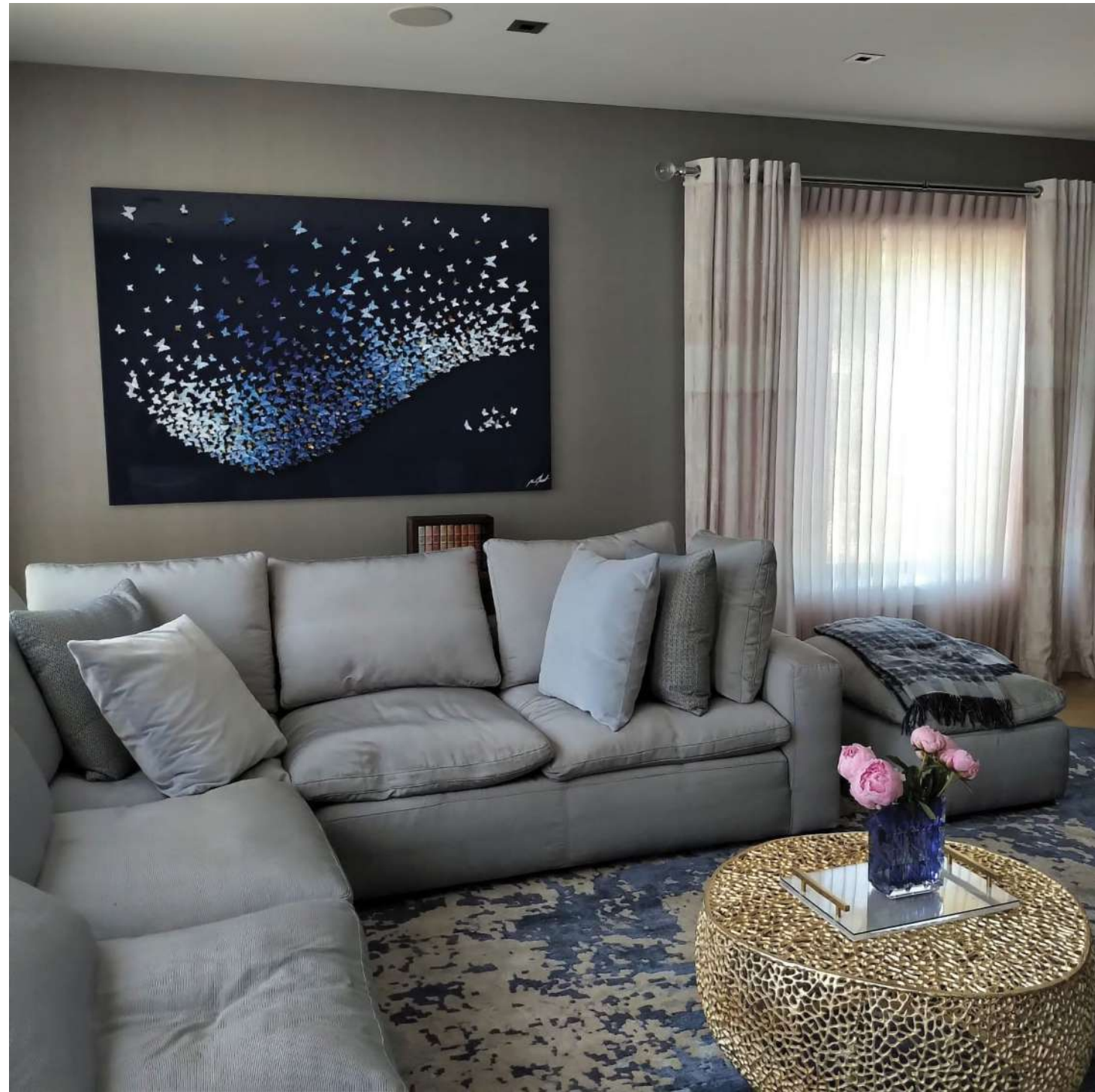


ANGEL WINGS 120x140cm





SHENZHEN SUBWAY STATION, CHINA



TWO BIRDS 200x100cm



Joel Amit



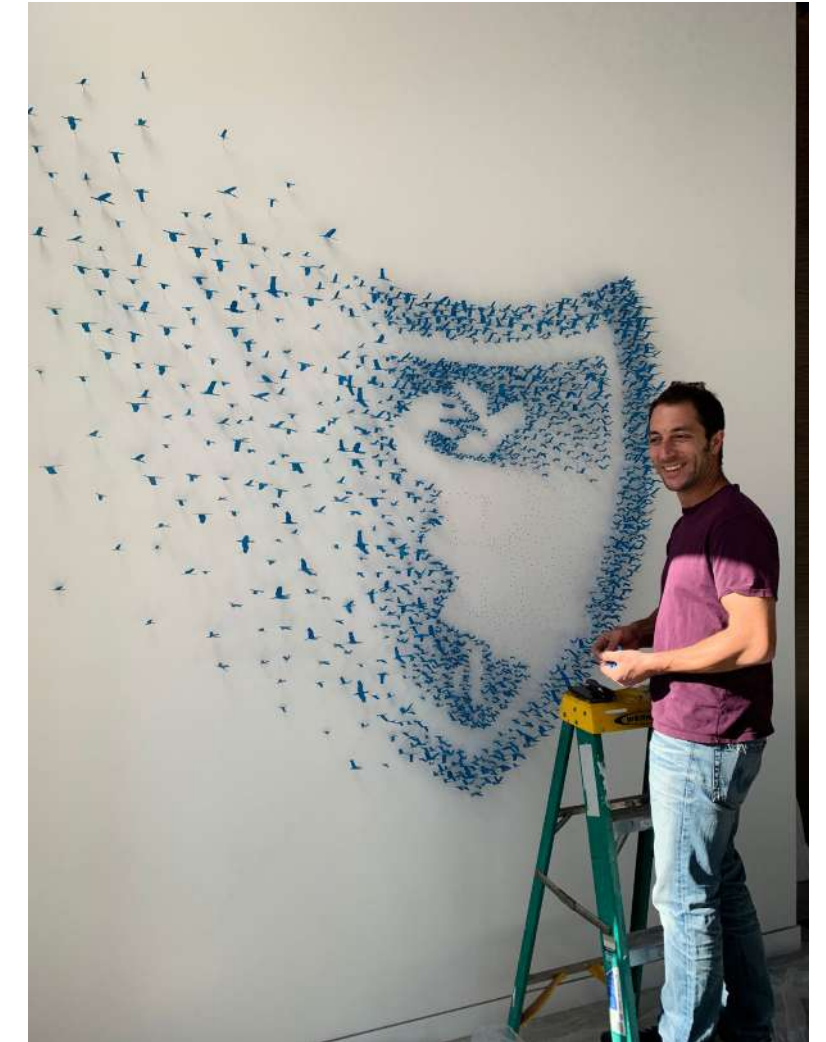
ALL MY LOVING 100x100cm

OPEN HEART 50x50cm

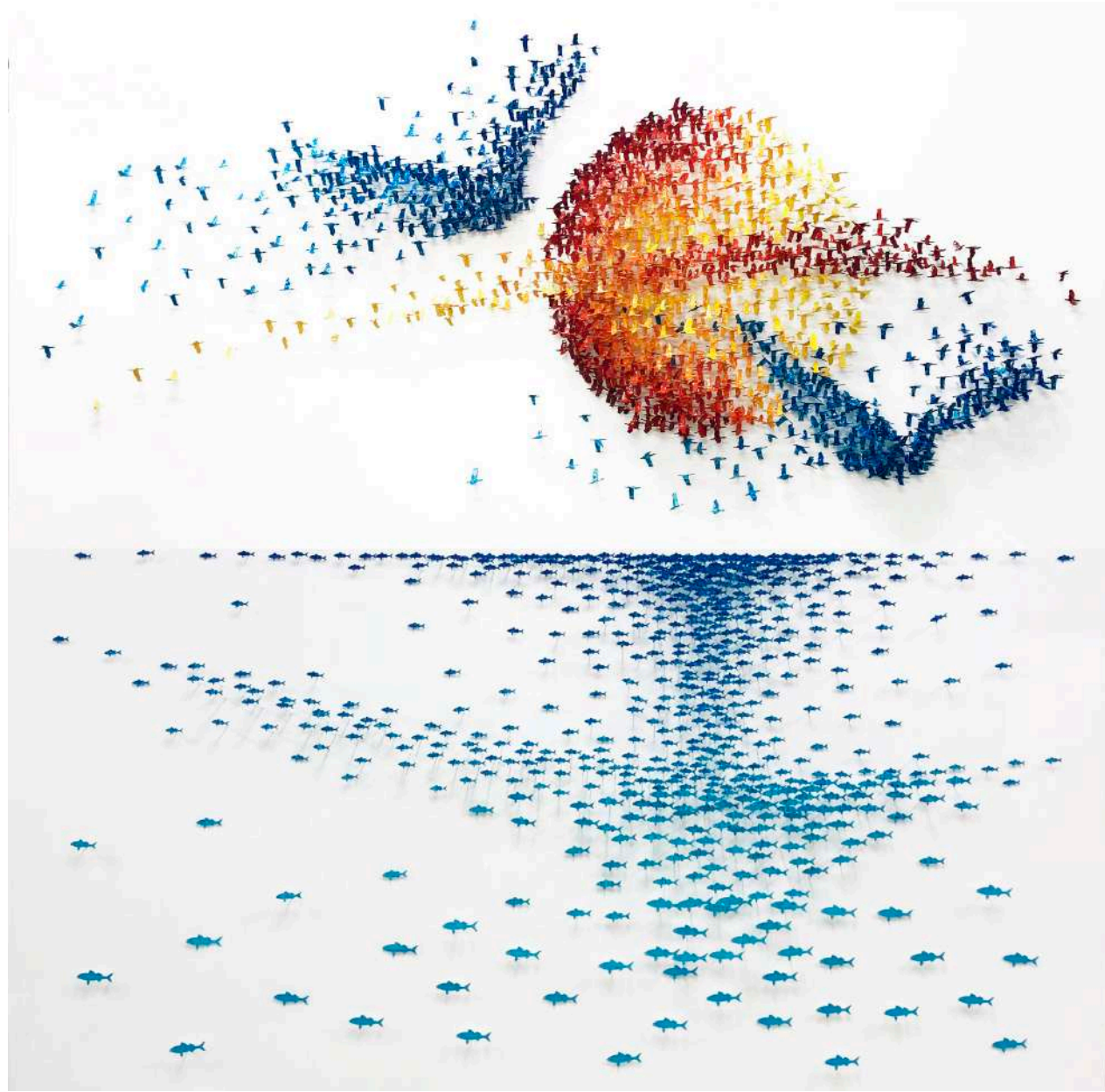


EL ESPIRAL DE LA
ESPERANSA,
MUSEUM OF MEMORY
AND TOLERANCE, MEXICO
CITY





BLUESHIELD CA HEADQUARTERS

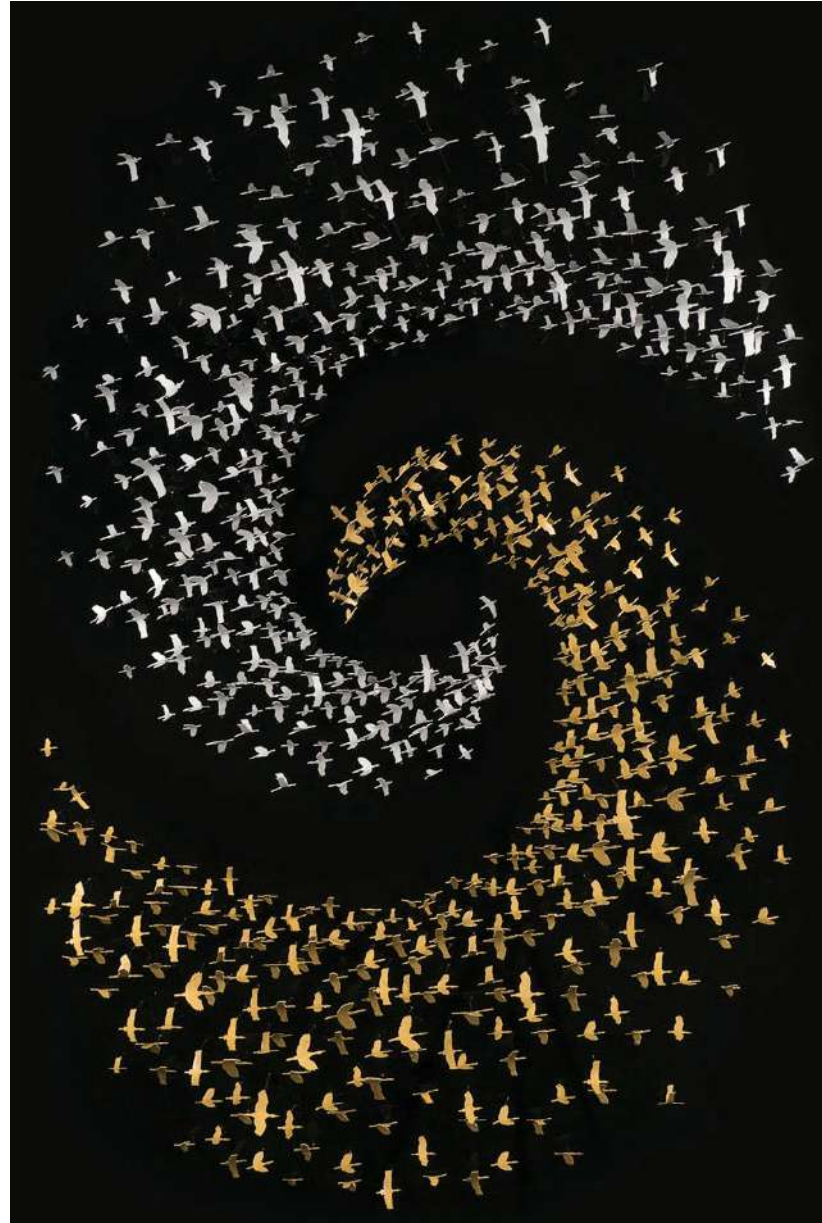


SUNSET WITH BIRDS 200x200cm





MORNING SUN 100x100cm



CREATION 100X150cm





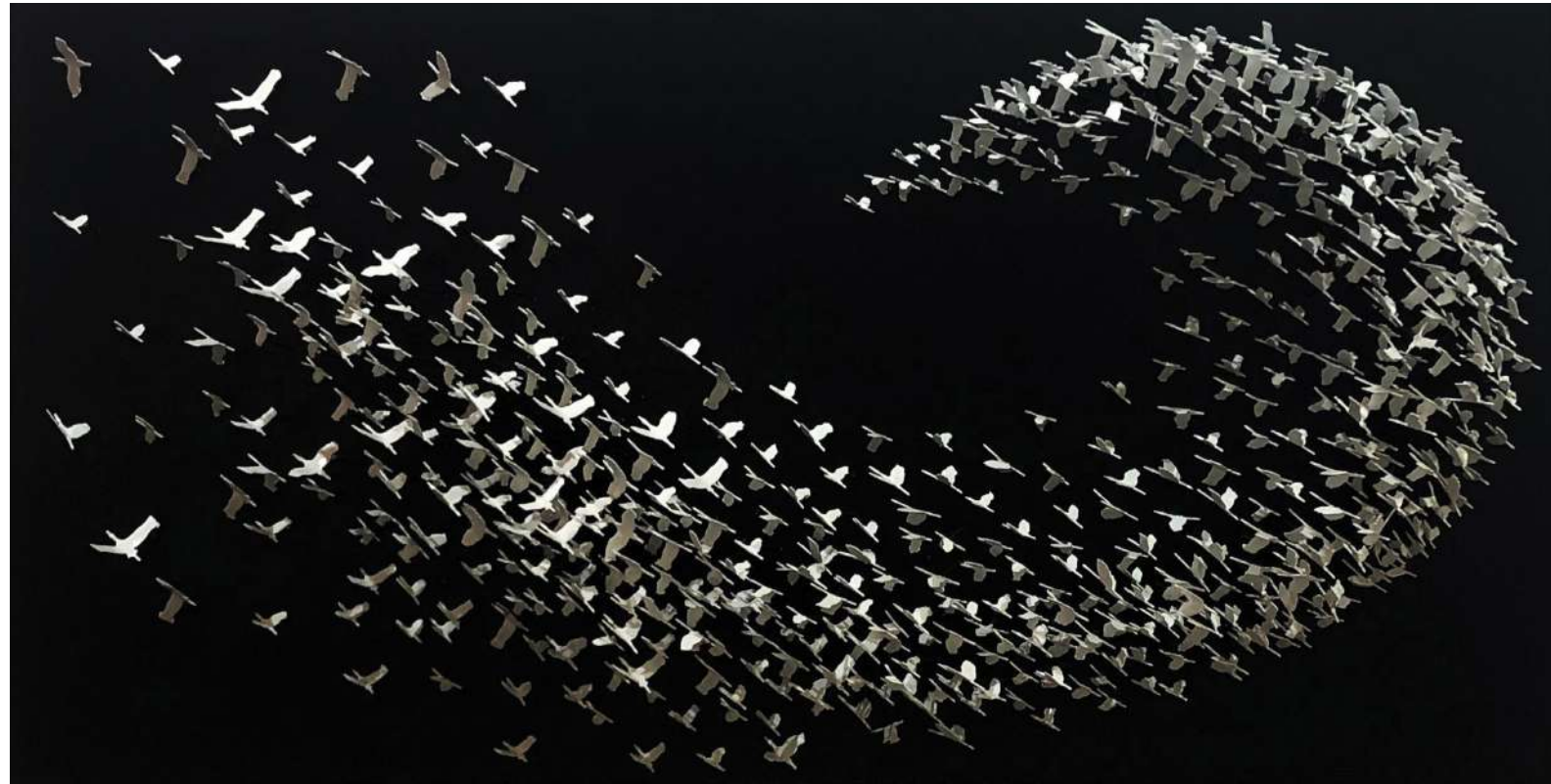
CHIEF 150X150cm

COHANIM 180X150cm



HERE COMES THE SUN 100x100cm



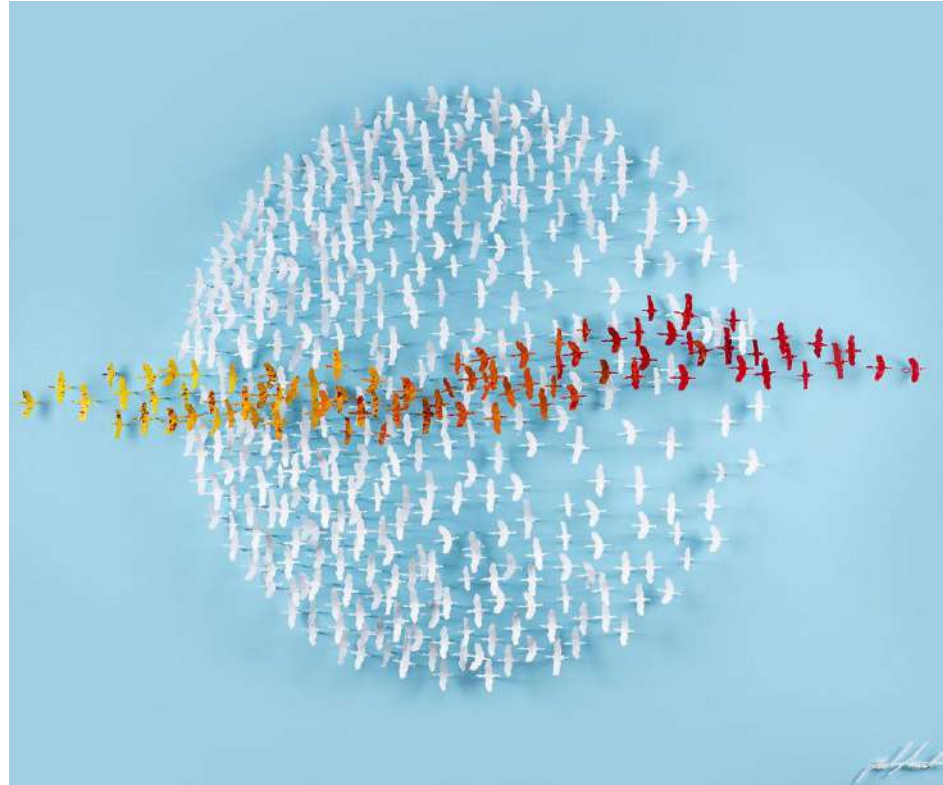


ABSTRACT 100x50cm

FLYING LOVE 60x60cm

BUTTERFLY HANSA 140x140cm



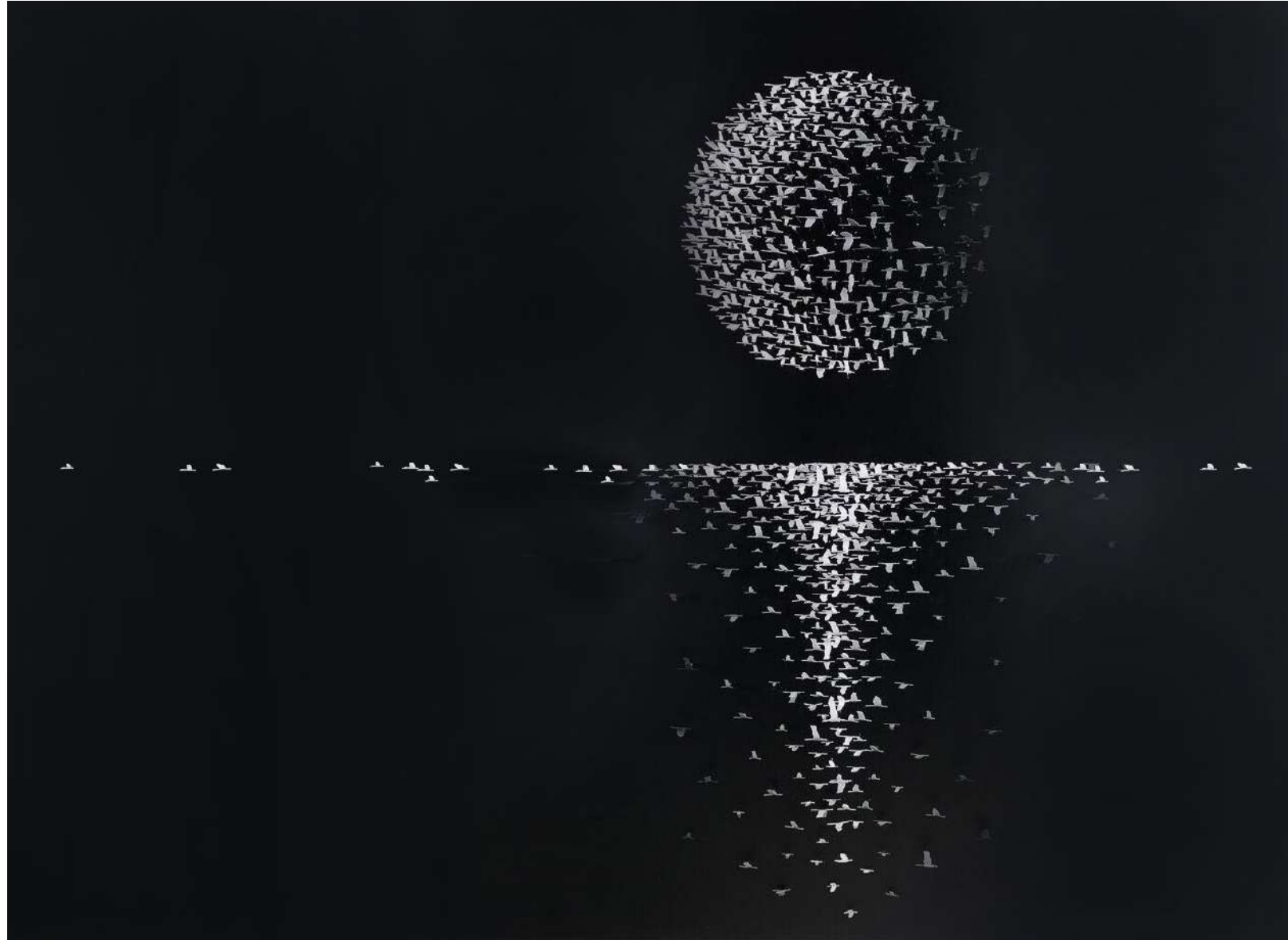


AFRICAN MOON 120x100cm

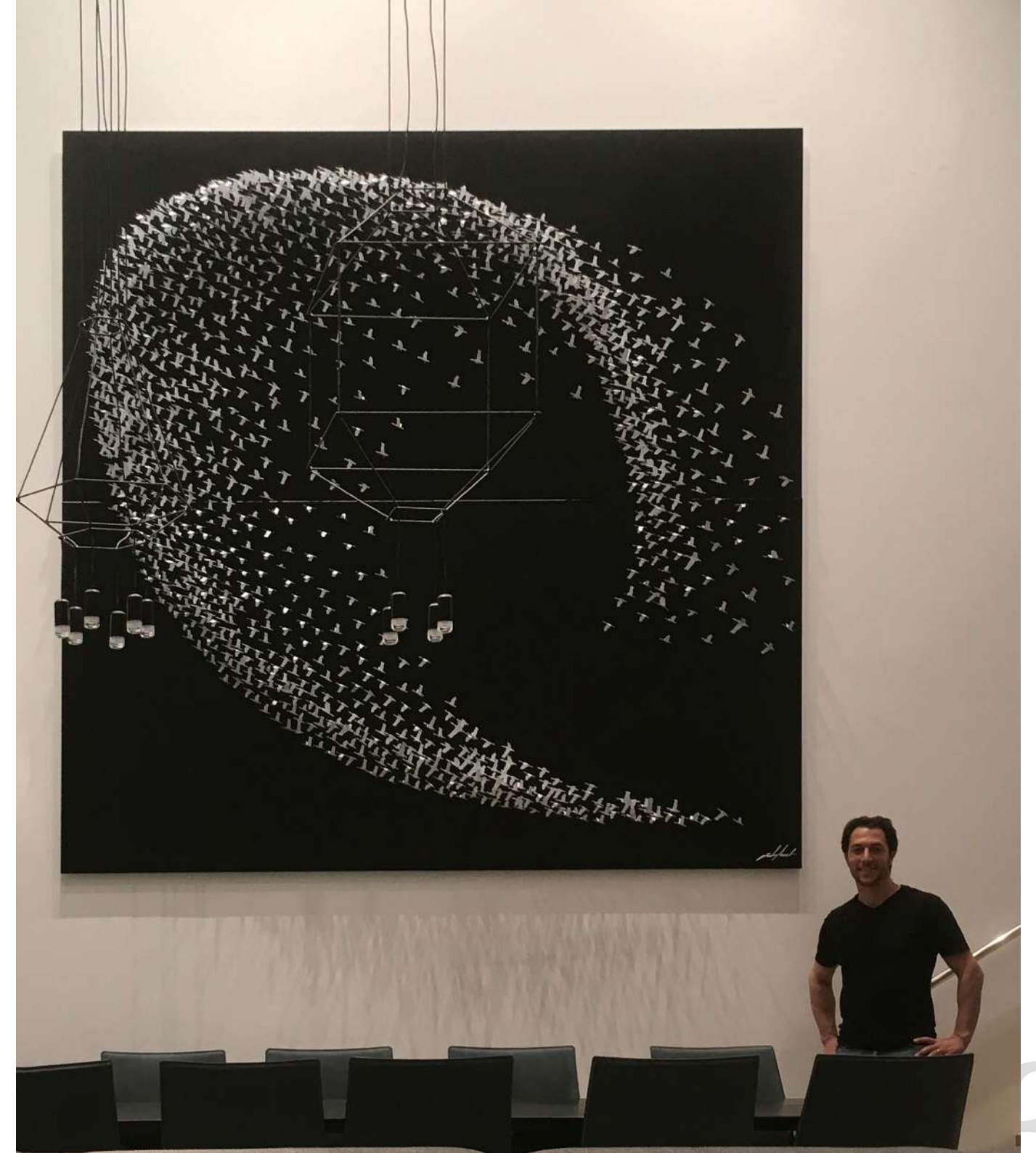


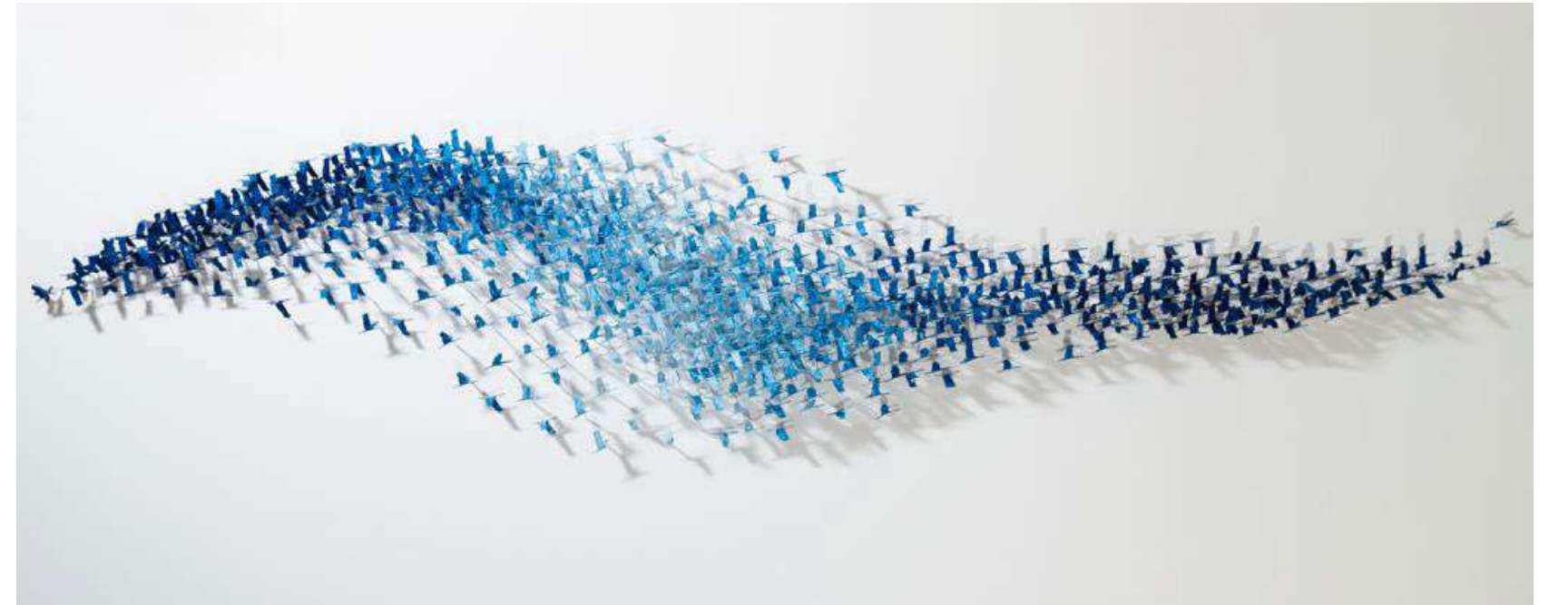


BUTTERFLY VERTIGO 150X150cm



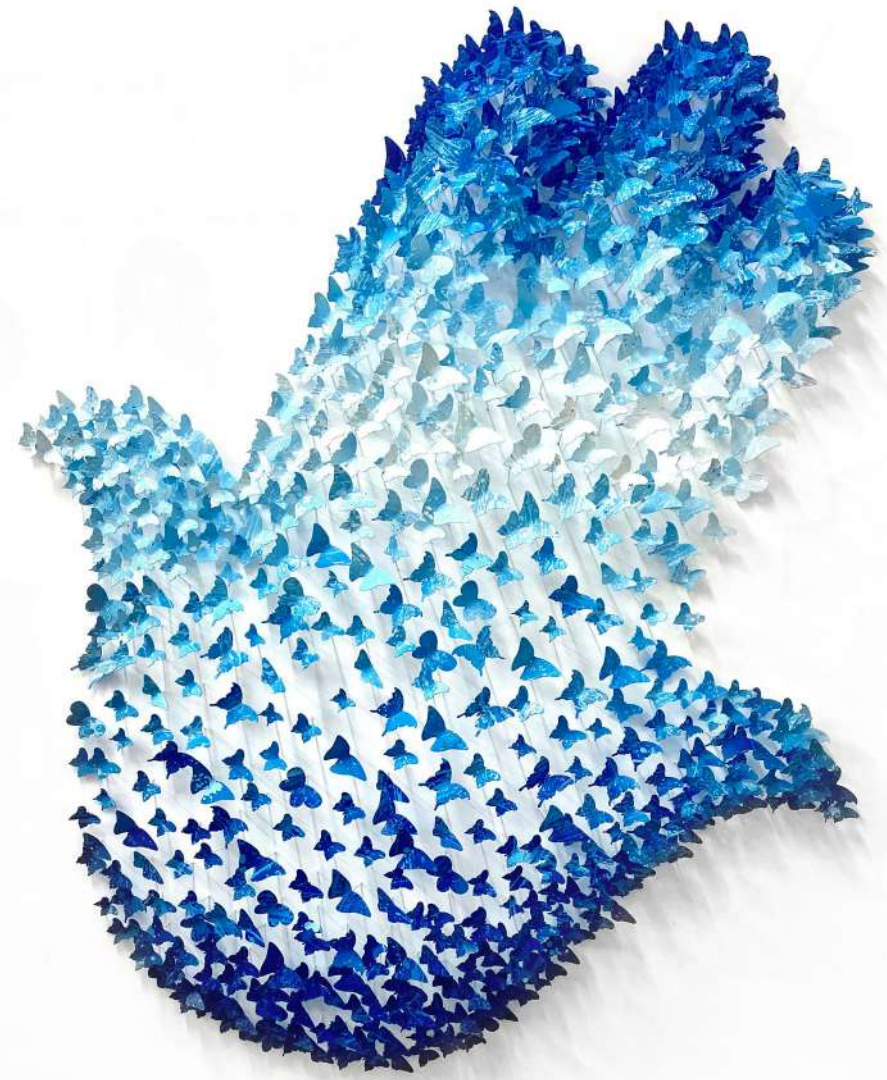
CLAIR DE LUNE 250X150cm





50 SHADES OF AN EYE 130X100cm

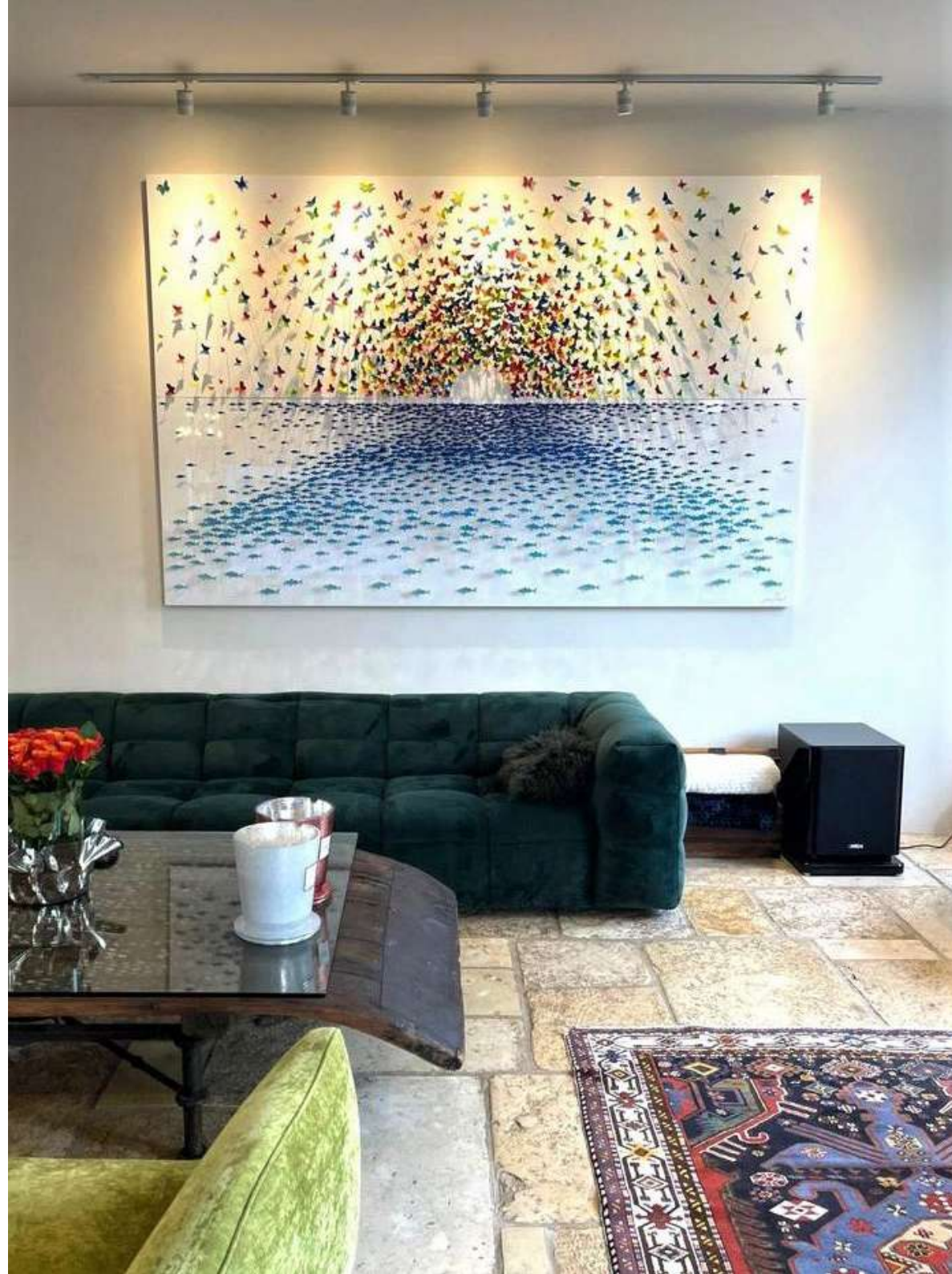
OCEAN SOAR 300x80cm



HAMSA 140x120cm

HAMSA SUN (CLOSE UP) 150x80cm

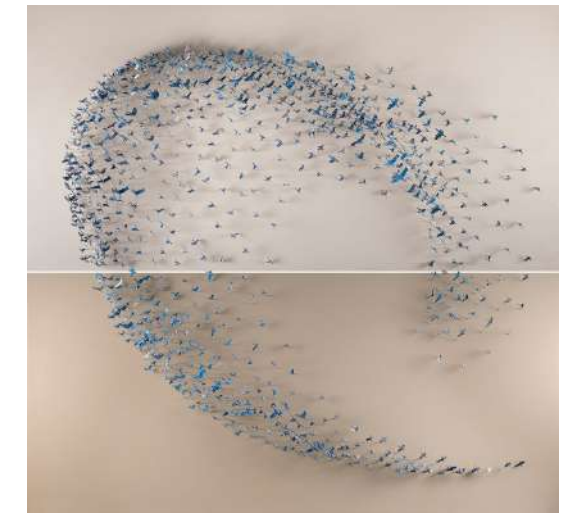
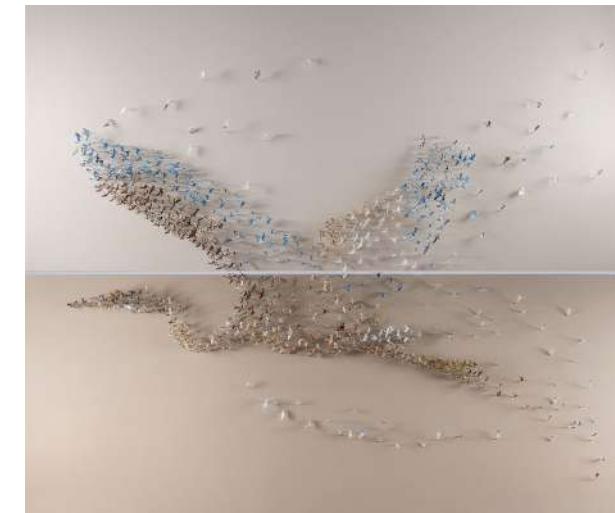
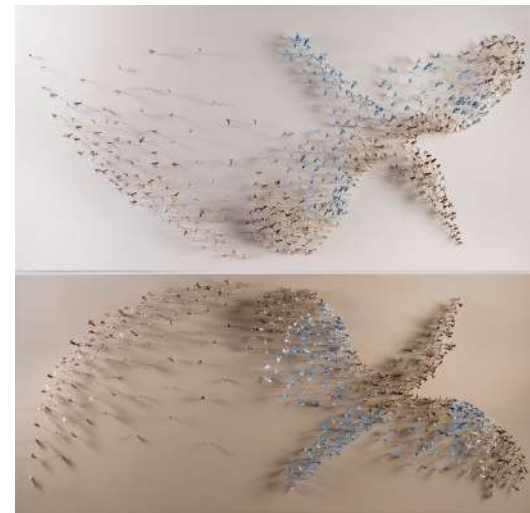




FLYING LOVE (top left) 100x100cm

FLYING LOVE (rest) 50x50cm



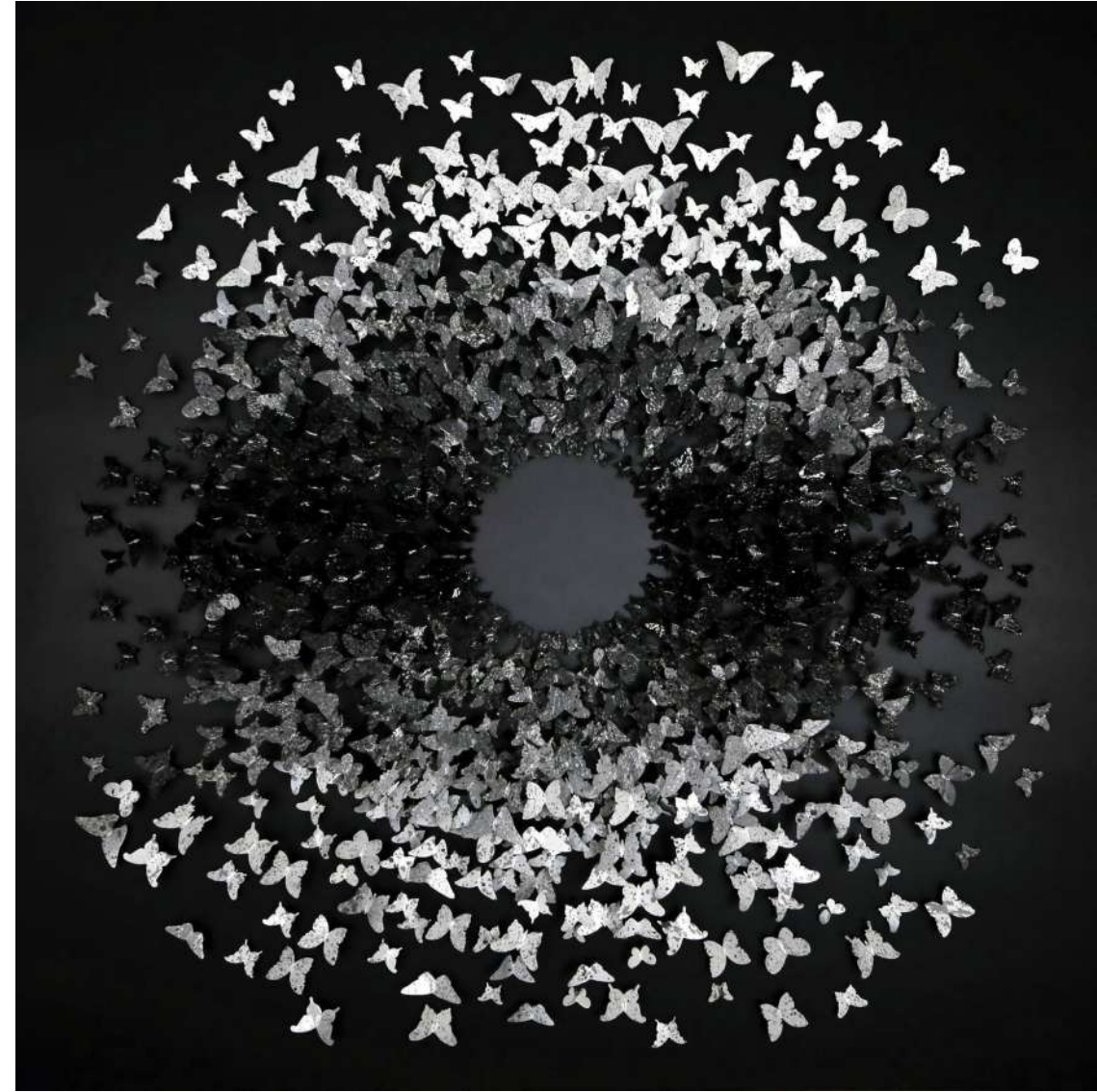


KINGFISHER 190x200cm

HERON 190x230cm

HAVEN 190x200cm

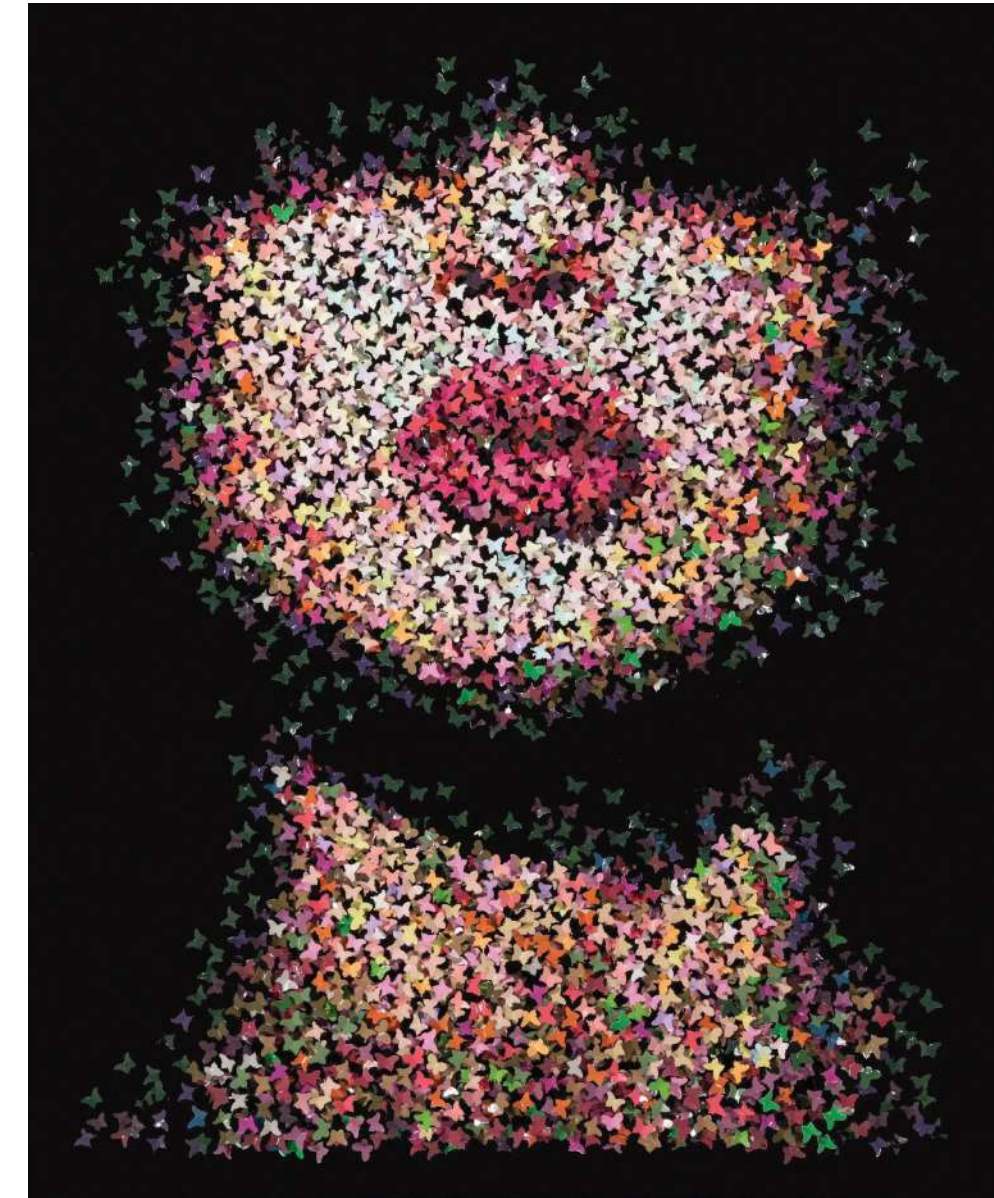
SPECIAL PROJECT FOR ENTRANCE LOBBIES, AMRAM ABRAHAM RESIDENCE, HADERA.



HERE COMES THE SUN 140x140cm



How do we conceive the reality we live in? Do we capture the broad image of our surroundings or do we reconstruct it in our minds from an endless amount of particles?



THE COLOR OF YOUR SKIN 160x130cm



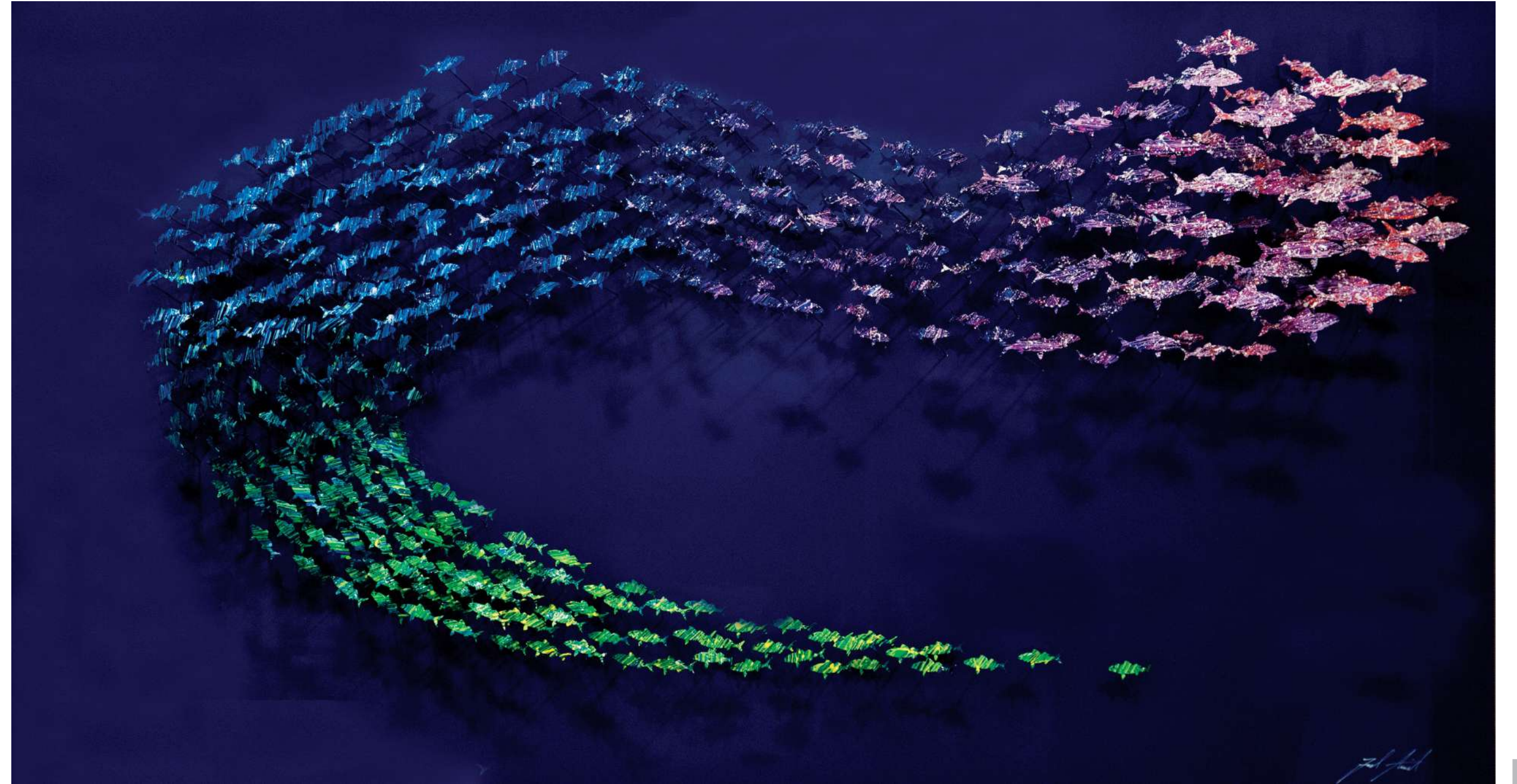
DOUBLE DANCE 240x40cm



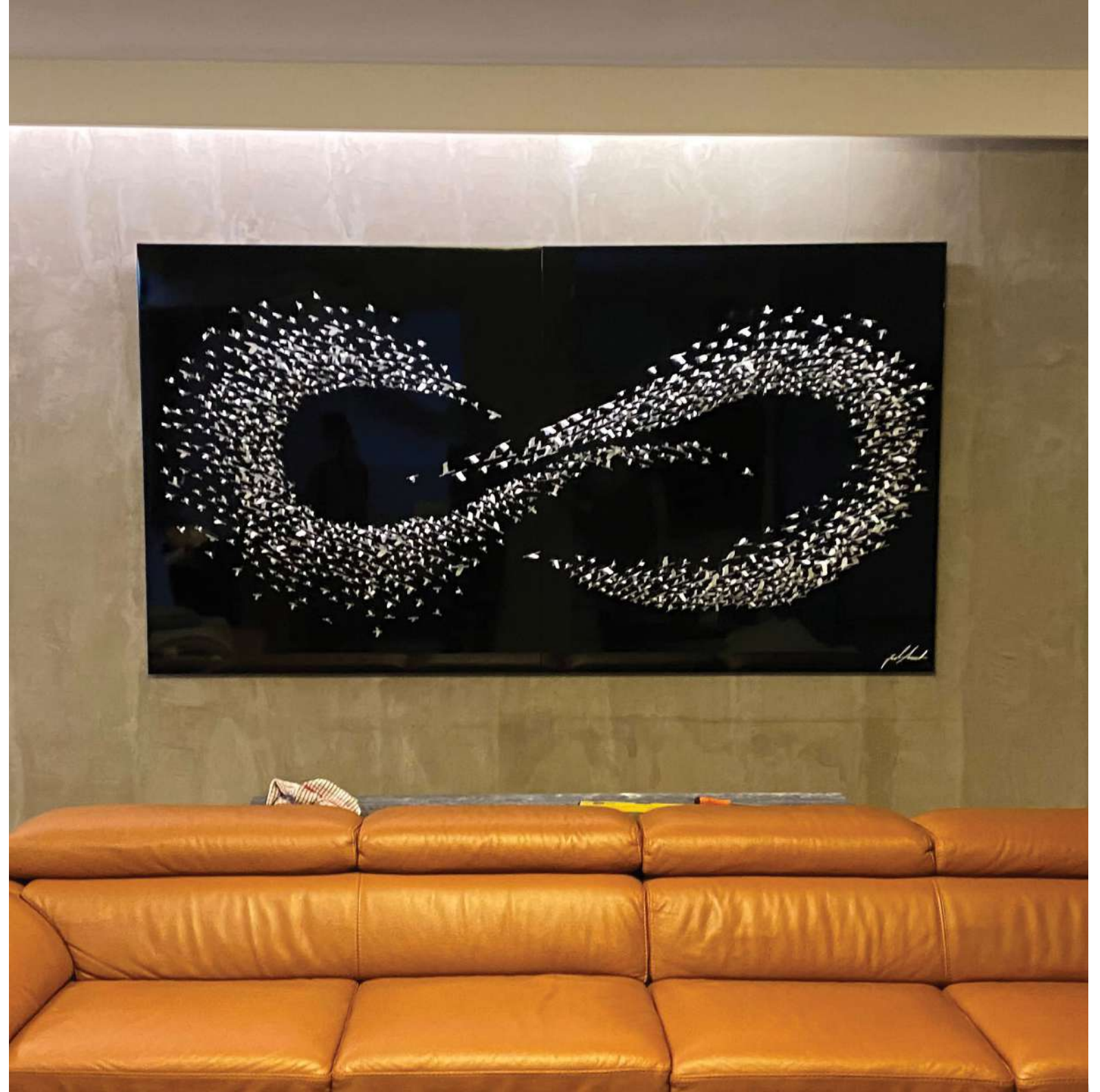
FLYING LOVE 50x50cm

HERE COMES THE SUN 150x150cm

STICK TOGETHER 150x80cm

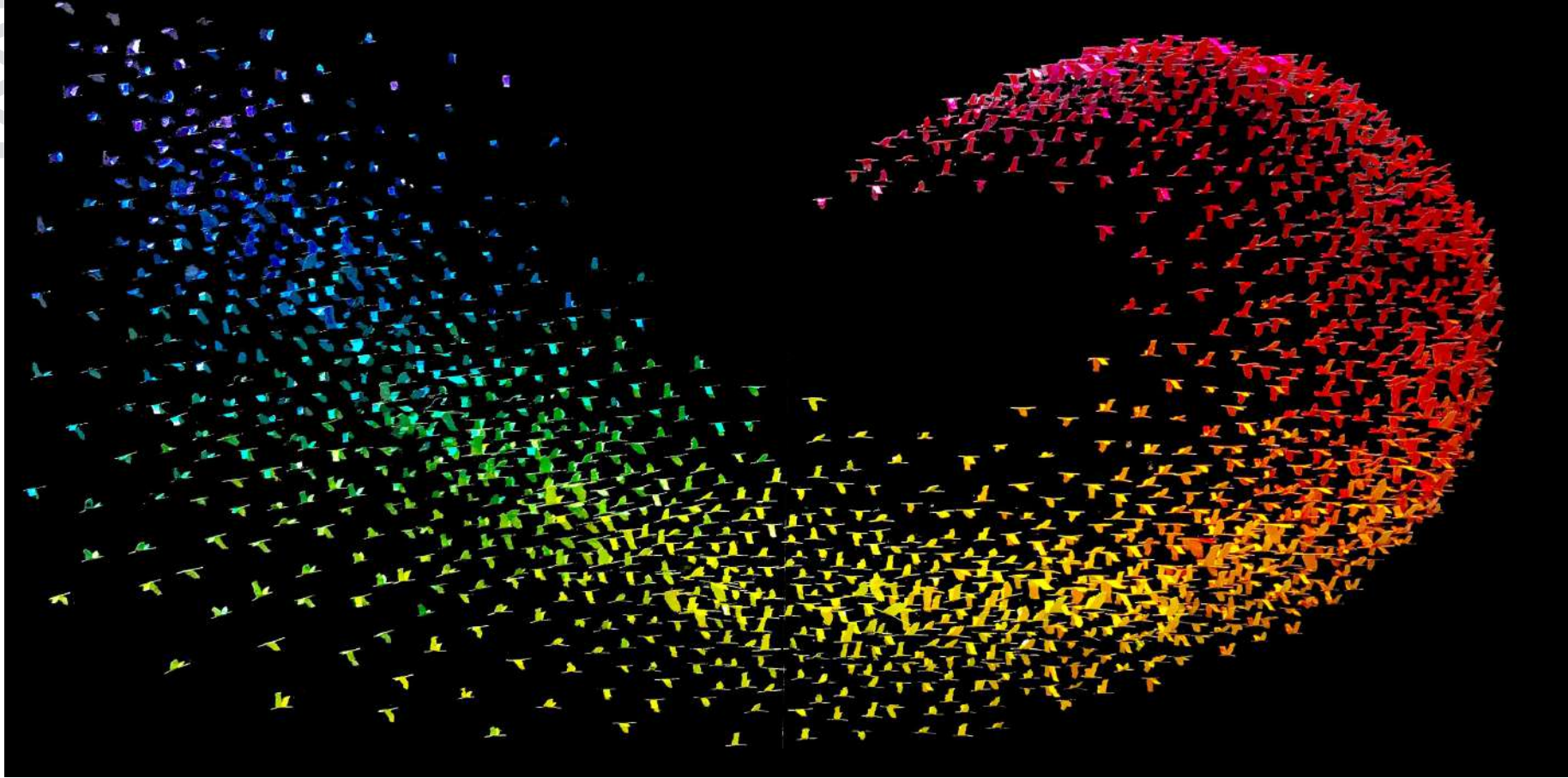


GUITAR 150x80cm





WE ARE THE WORLD 210x120cm



ABSTRACT 230x115cm



FLYING SUN 150x150cm



MSD MEMORIAL, HABAD PARKLAND CENTER, MIAMI

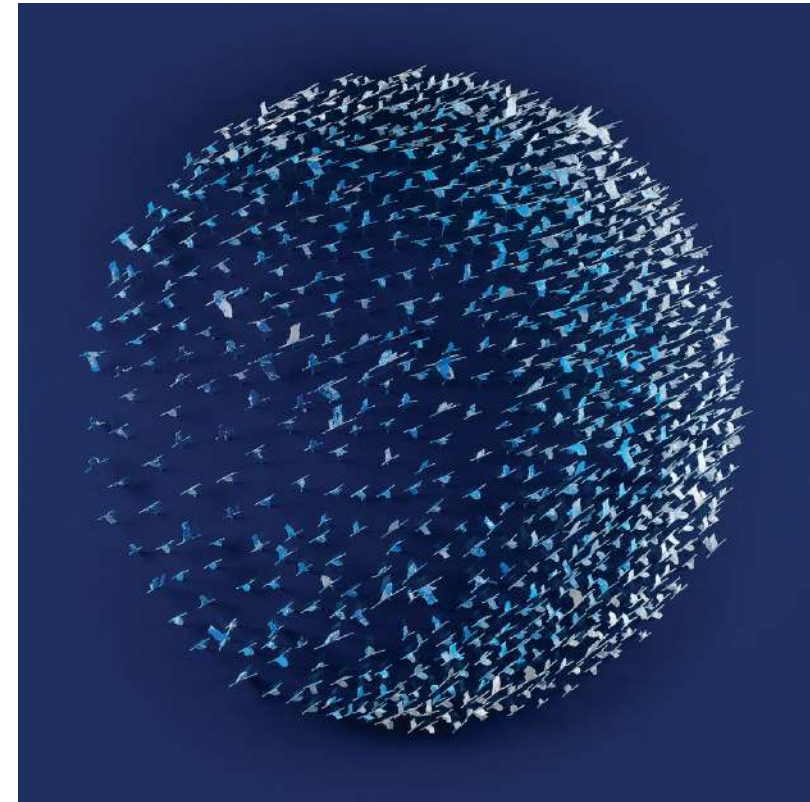


PERFUME 100x140cm



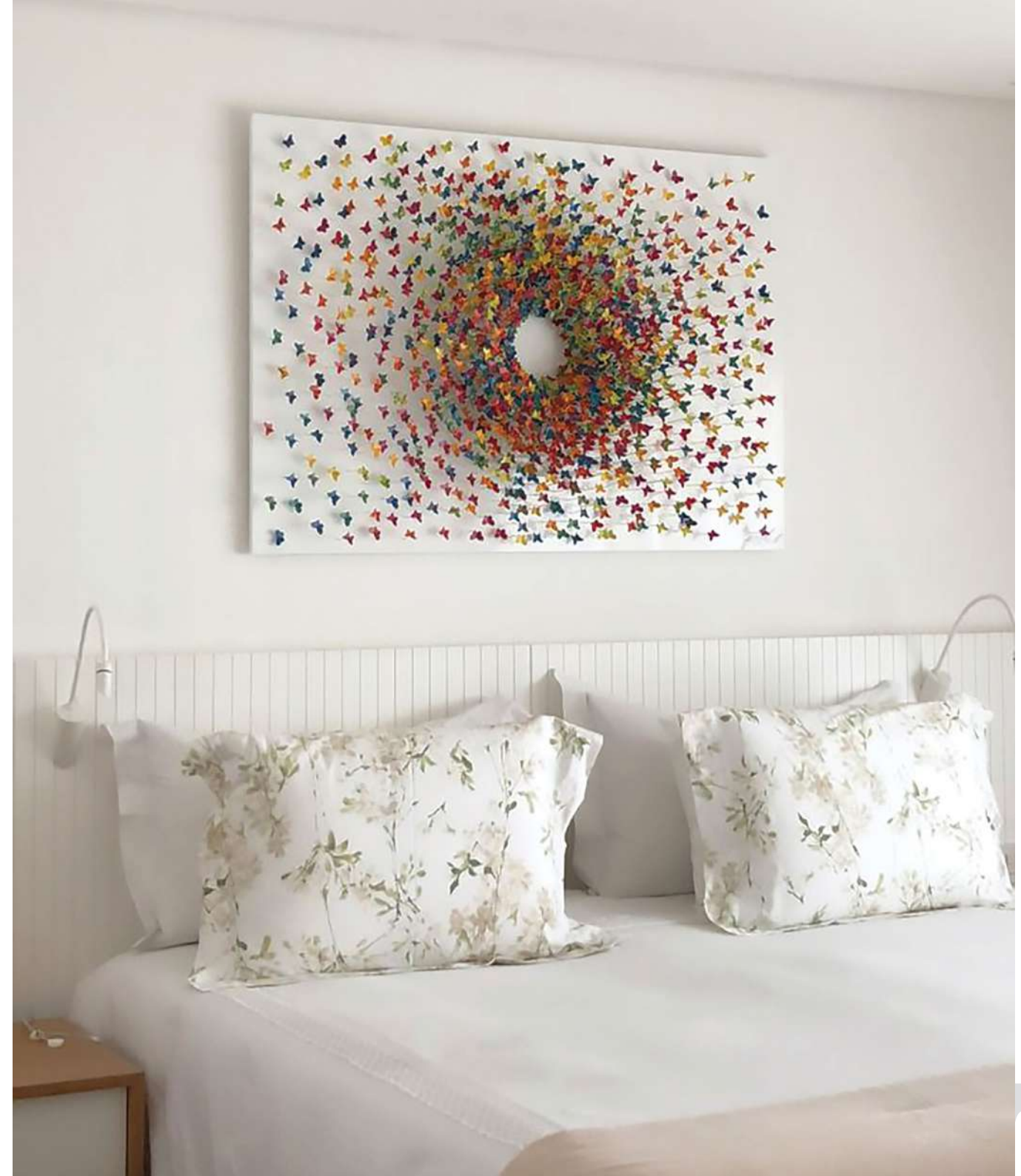


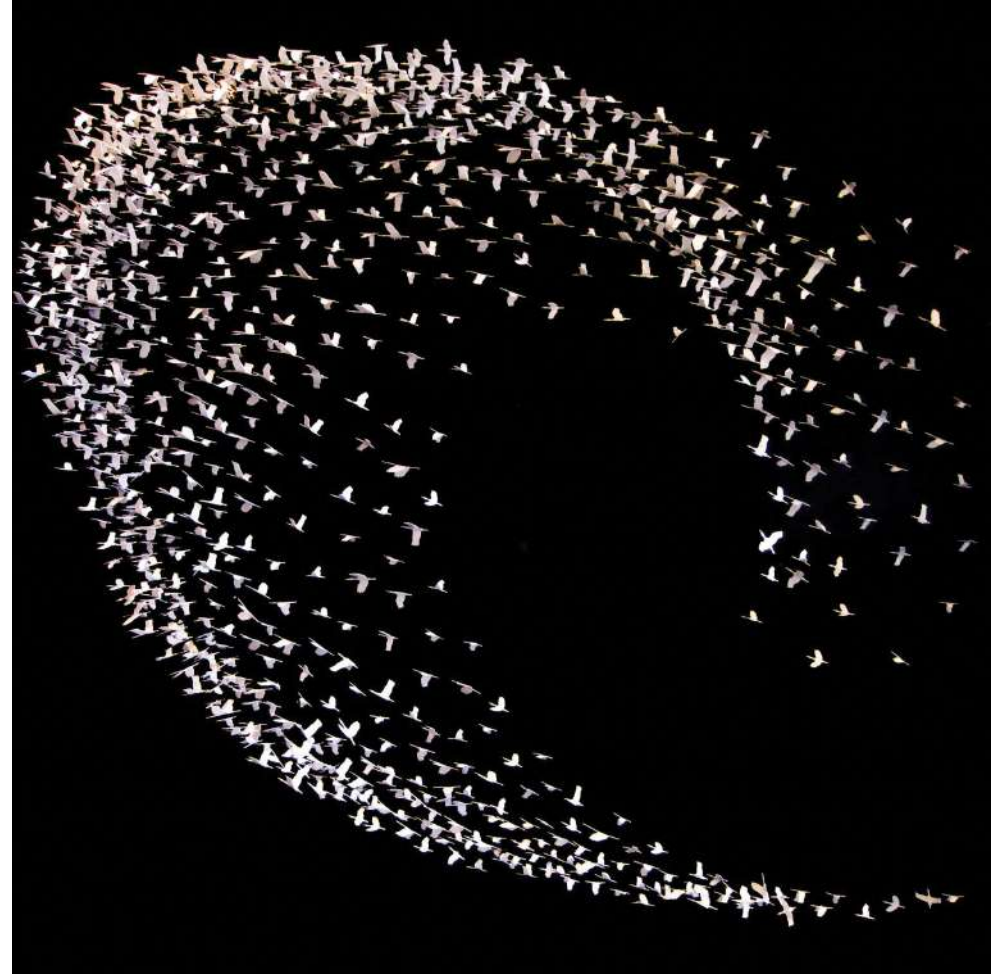
BLUE MOON 100x100cm





VERTIGO 150x100cm





WAVE 150x150cm



ANGEL WINGS 150x150cm

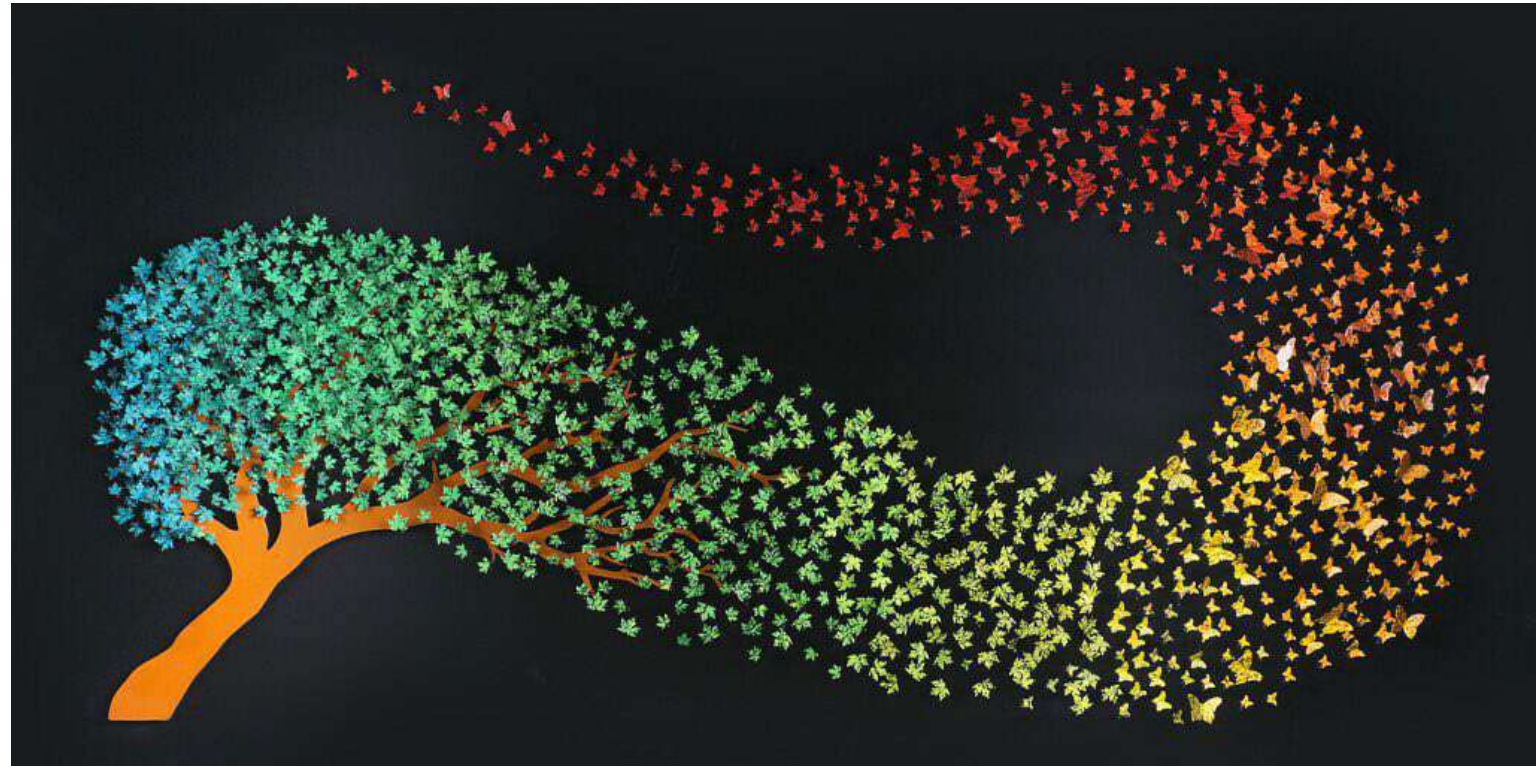
BLUE SKIES 200x160cm





YOU'RE IN MY HEART 120x90cm

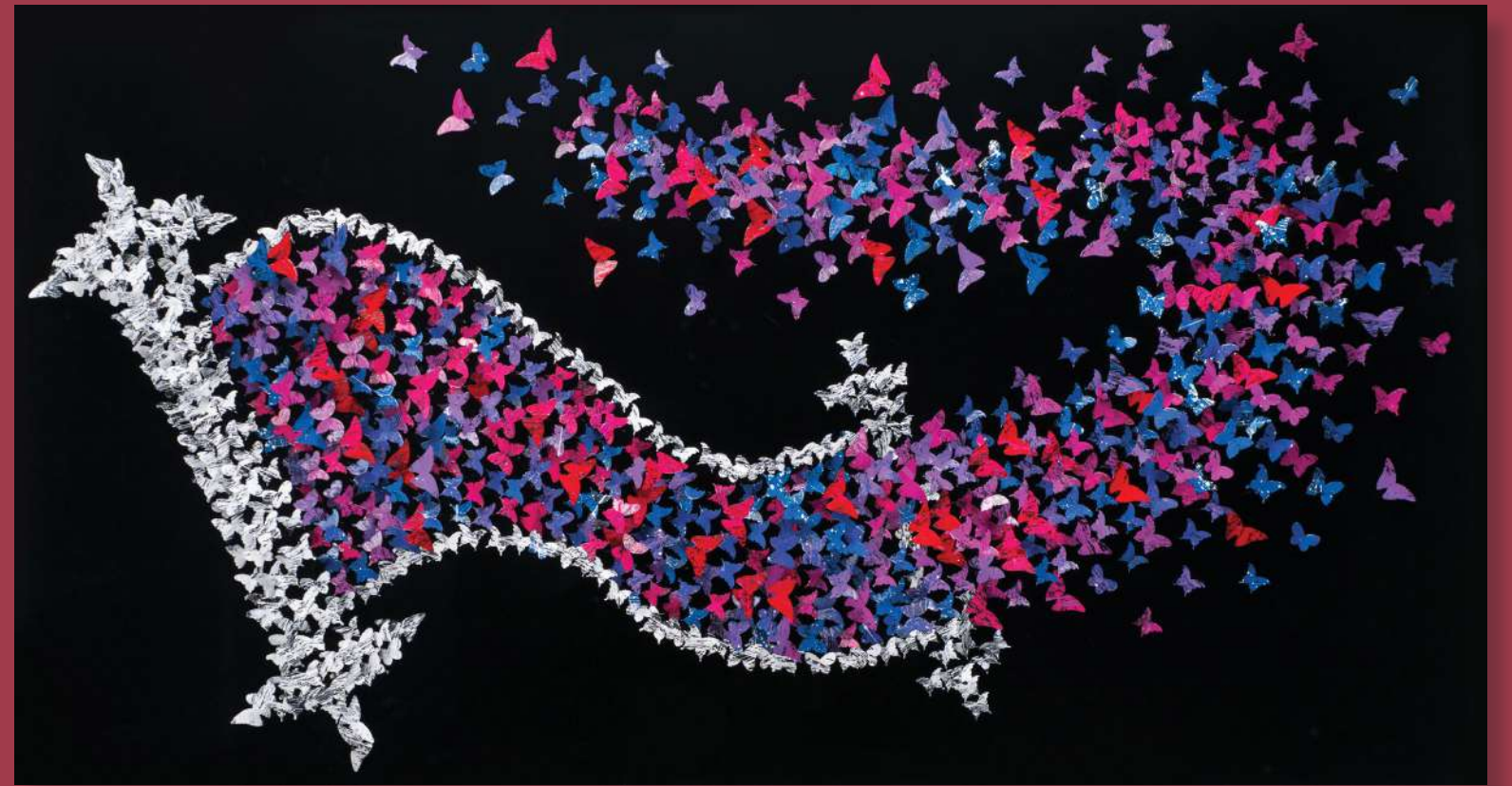
YOU'RE IN MY HEART 120x90cm



TREE 230x115cm



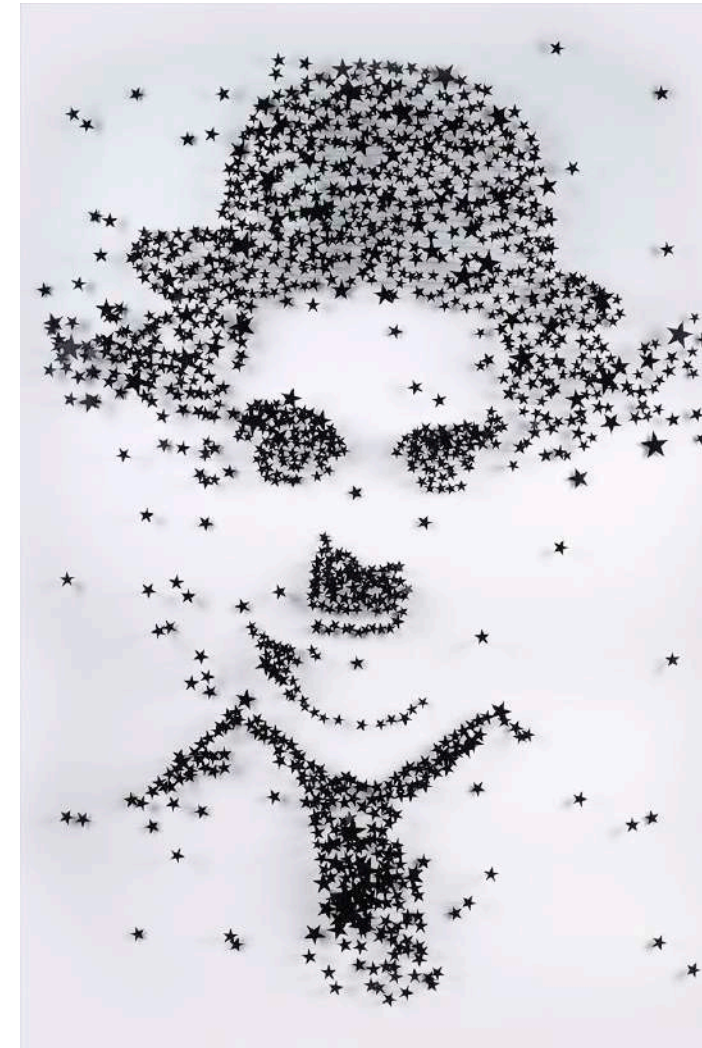
SEFER TORA
150x80cm





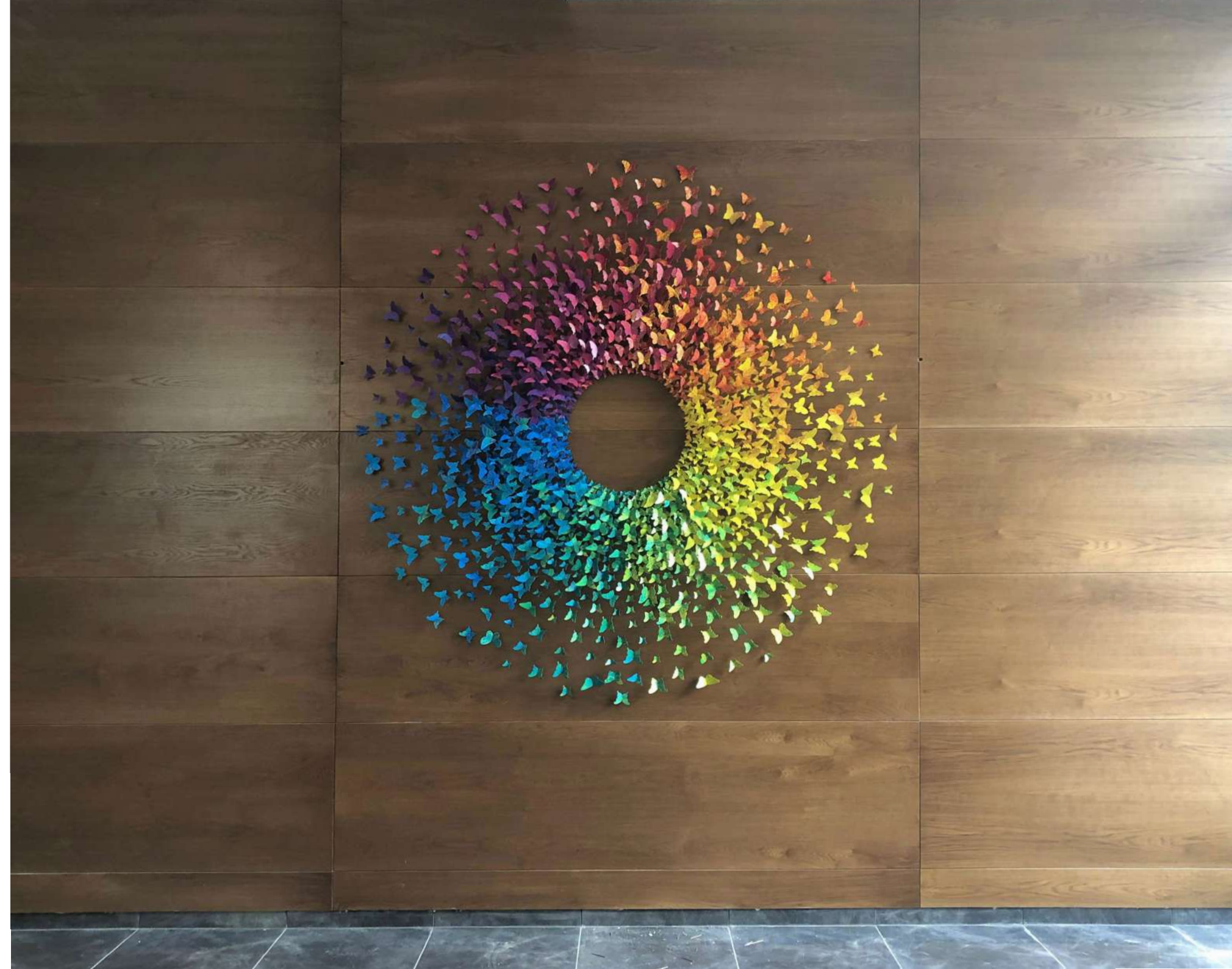
FLYING SUN 140x140cm

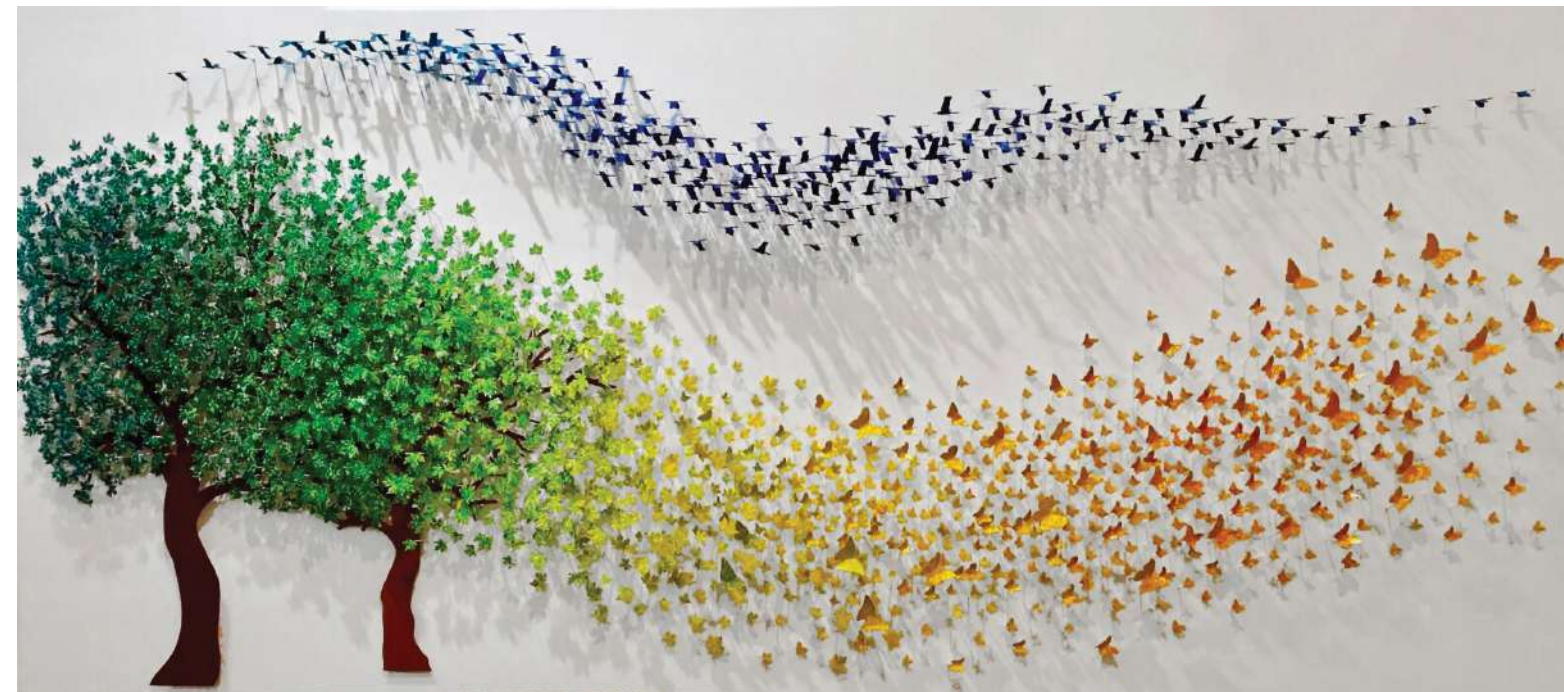
CHARLIE CHAPLIN 180x120cm





HAMSA 140x120cm





NATURE HARMONY 240x110cm

FISH WAVE 180x120cm



Joel Amit & Adriana Naveh

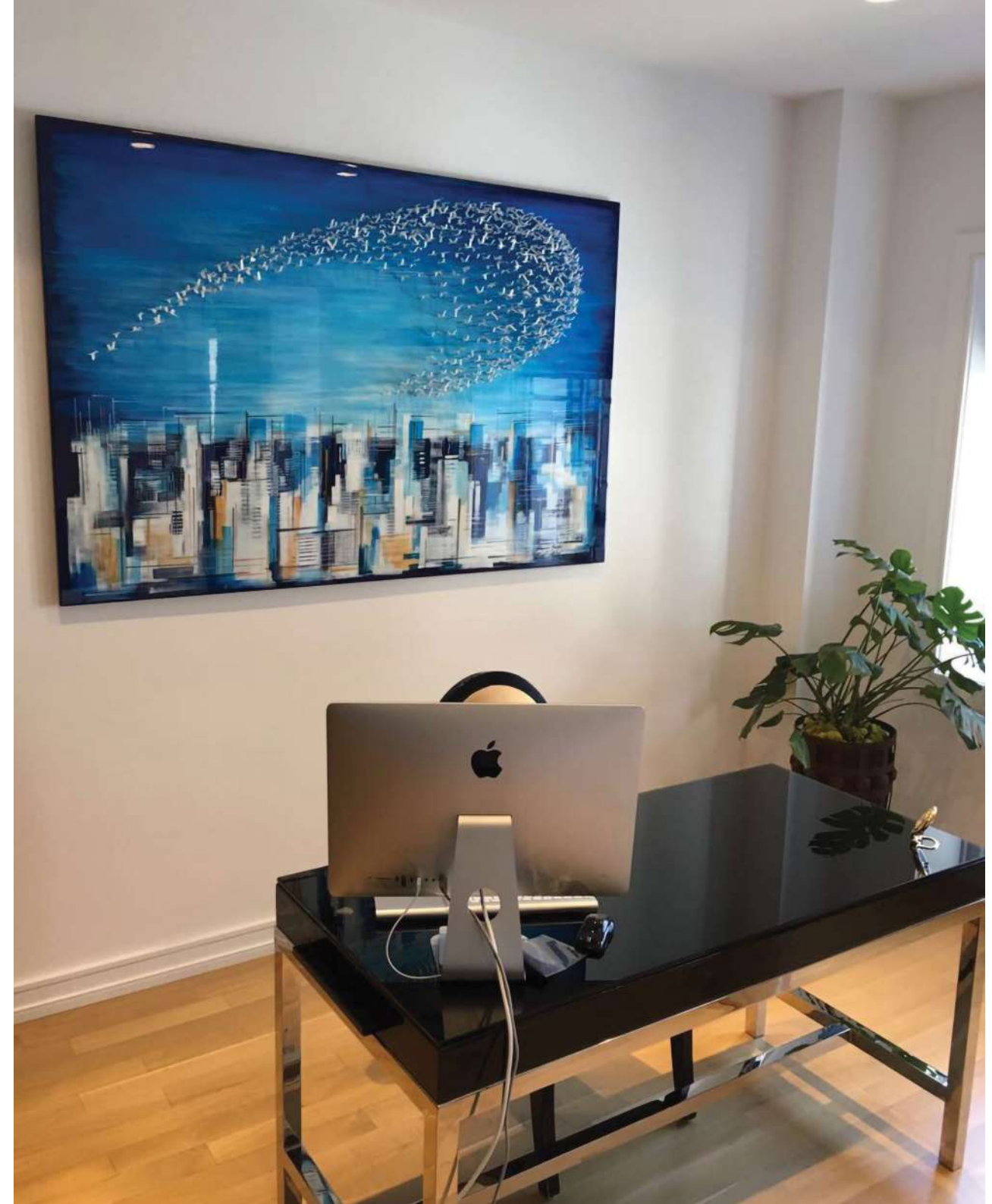
Sharing a deep love for their home town Jerusalem, Adriana Naveh and Joel Amit have joined forces in this unique and rare collaboration.



FLYING OVER THE WALL 150x100cm



SHEMA 200x100cm





KI ME'ZION 120x180cm

